



**BSL H75**



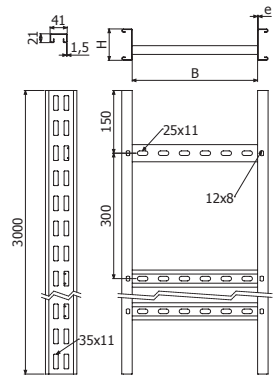
L = 3 m

	B		H		e	GC		i304		i316	
	mm	inch	mm	inch		REF.	kg/m	REF.	kg/m	REF.	kg/m
BSL 100X75X1,5-300 3M	100	4"	50	2"	1,5	2/15136	3,78	2/10285	3,43	2/15159	3,43
BSL 150X75X1,5-300 3M	150	6"	50	2"	1,5	2/15137	4,00	2/10286	3,63	2/15160	3,63
BSL 300X75X1,5-300 3M	300	12"	50	2"	1,5	2/15138	4,66	2/10287	4,23	2/15161	4,23
BSL 450X75X1,5-300 3M	450	18"	50	2"	1,5	2/15139	5,32	2/10288	4,83	2/15162	4,83
BSL 600X75X1,5-300 3M	600	24"	50	2"	1,5	2/15140	6,98	2/10289	5,43	2/15163	5,43
BSL 750X75X1,5-300 3M	750	30"	50	2"	1,5	2/15141	6,64	2/10290	6,03	2/15164	6,03
BSL 900X75X1,5-300 3M	900	36"	50	2"	1,5	2/15142	7,30	2/10291	6,63	2/15165	6,63

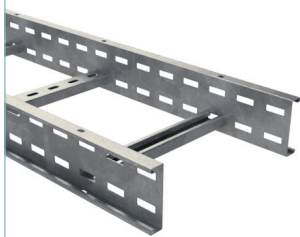
Rung 41x21x1,5



2 x JUBSL 50 (2/15424-GC // 2/18509-i304 // 2/15433-i316)



**BSL H100**



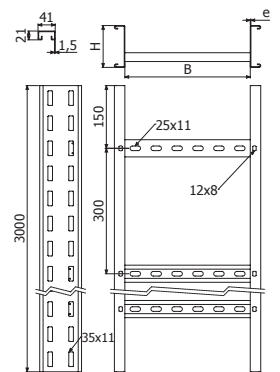
L = 3 m

	B		H		e	GC		i304		i316	
	mm	inch	mm	inch		REF.	kg/m	REF.	kg/m	REF.	kg/m
BSL 150X100X1,5-300 3M	150	6"	100	4"	1,5	2/15143	4,73	2/14615	4,26	2/15166	4,26
BSL 300X100X1,5-300 3M	300	12"	100	4"	1,5	2/15144	5,32	2/14617	4,78	2/15167	4,78
BSL 450X100X1,5-300 3M	450	18"	100	4"	1,5	2/15145	5,90	2/14619	5,31	2/15168	5,31
BSL 600X100X1,5-300 3M	600	24"	100	4"	1,5	2/15146	6,48	2/14621	5,83	2/15169	5,83
BSL 750X100X1,5-300 3M	750	30"	100	4"	1,5	2/15147	7,06	2/14622	6,36	2/15170	6,36
BSL 900X100X1,5-300 3M	900	36"	100	4"	1,5	2/15148	7,64	2/14623	6,88	2/15171	6,88

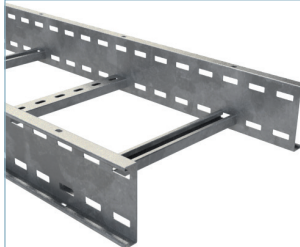
Rung 41x21x1,5



2 x JUBSL 100 (2/15425-GC // 2/15065-i304 // 2/15434-i316)



**BSL H125**



L = 3 m

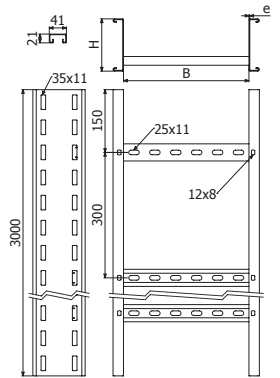
	B		H		e	GC		i304		i316	
	mm	inch	mm	inch		REF.	kg/m	REF.	kg/m	REF.	kg/m
BSL 150X125X2-300 3M	150	6"	125	5"	2	2/15149	6,79	2/14624	6,28	2/15172	6,28
BSL 300X125X2-300 3M	300	12"	125	5"	2	2/15150	7,37	2/14626	6,82	2/15173	6,82
BSL 450X125X2-300 3M	450	18"	125	5"	2	2/15151	7,95	2/14628	7,36	2/15174	7,36
BSL 600X125X2-300 3M	600	24"	125	5"	2	2/15152	8,54	2/14630	7,90	2/15175	7,90
BSL 750X125X2-300 3M	750	30"	125	5"	2	2/15153	9,93	2/14631	9,18	2/15176	9,18
BSL 900X125X2-300 3M	900	36"	125	5"	2	2/15154	10,67	2/14632	9,87	2/15177	9,87

Width ≤ 600 - Rung 41x21x1,5

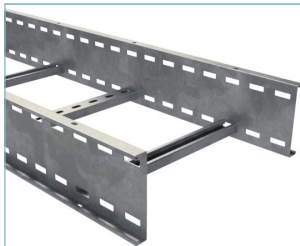
Width > 600 - Rung 41x21x2



2 x JUBSL 125 (2/15426-GC // 2/15476-i304 // 2/15435-i316)



**BSL H150**



L = 3 m

	B		H		e	GC		i304		i316	
	mm	inch	mm	inch		REF.	kg/m	REF.	kg/m	REF.	kg/m
BSL 150X150X2-300 3M	150	6"	150	6"	2	2/15155	7,59	2/14633	7,02	2/15178	7,02
BSL 300X150X2-300 3M	300	12"	150	6"	2	2/6437	8,17	2/14635	7,56	2/15179	7,56
BSL 450X150X2-300 3M	450	18"	150	6"	2	2/15156	8,75	2/14637	8,10	2/15180	8,10
BSL 600X150X2-300 3M	600	24"	150	6"	2	2/6439	9,34	2/14639	8,64	2/15181	8,64
BSL 750X150X2-300 3M	750	30"	150	6"	2	2/15157	10,73	2/14640	9,92	2/15182	9,92
BSL 900X150X2-300 3M	900	36"	150	6"	2	2/15158	11,47	2/14641	10,61	2/15183	10,61

Width ≤ 600 - Rung 41x21x1,5

Width > 600 - Rung 41x21x2



2 x JUBSL 150 (2/6445-GC // 2/15539-i304 // 2/15436-i316)

